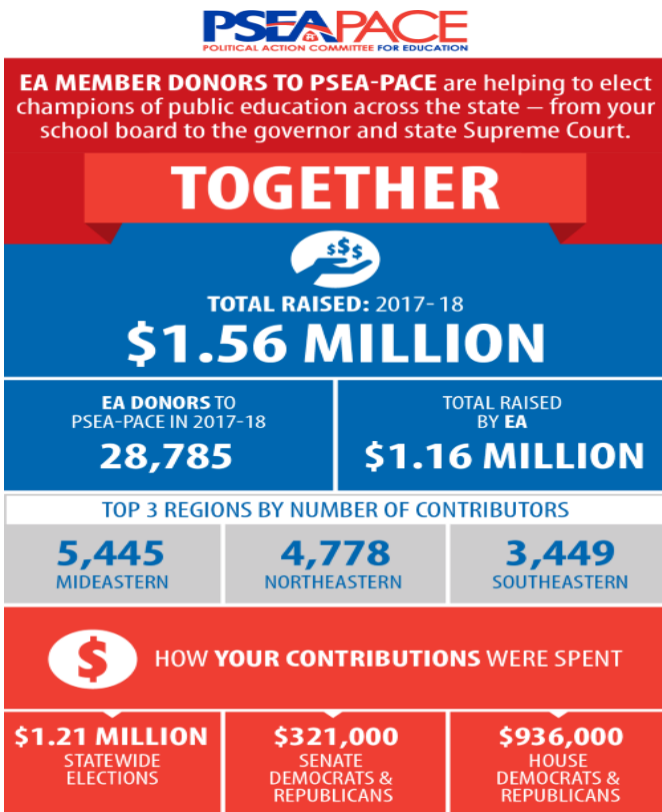


# STAND UP FOR PUBLIC EDUCATION

Did you know that 95 percent of PSEA-PACE donors contribute less than \$100 per year? We rely on voluntary contributions from members just like you to elect and support candidates of any party who support public education. Yes, we do mean candidates of any party. PSEA members just like you evaluate candidates based upon their view of public education – not their political party.



## PSEA PACE

*“Stand up for your students, your profession, and the secure retirement you earned”*

PACE contributions support candidates from either party in state and local elections who are pro public education. All voluntary contributions are voluntary. Follow the link below to contribute.

PSEA-PACE is powered by voluntary contributions from PSEA members – not dues money.

<https://www.psea.org/pace>

## PACE Report

Submitted by,

Kevin High Highk@readingsd.org